
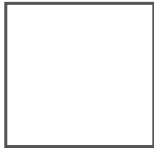


 *Diamond*
Vitrified

 400 × 400 mm
COLLECTION 2021



Size



40 x 40 cm

12 mm thickness

FINISHING

PUNCH

PLAIN



ABOUT US

Diamond vitrified exporters of high quality / premium vitrified tiles.

The company carries the vision to provide world class GVT / PGVT tiles. It believes in producing superior quality GVT / PGVT tiles with sharp vision on market. It takes lot of skills to design and manufacture in such a competitive market, but the company has a track record of many successful years as a leading ceramic company.

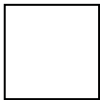
MISSION

Diamond aims to achieve its objectives in an environment of fairness, honesty and courtesy towards its clients, employees, vendors, and society.

VISION

Our vision is to lead the market with innovations in product development to improve the quality of life and lifestyle of its customer. With timely adaptations to rapidly developing technologies and meaningful investment in human resource training, Diamond will strive to maintain the differentiation edge through provision of unmatched products and services to its customers at a competitive price. The ceramic tiles industry is a major force for the improvement of quality of life across the world.

Size



40 x 40 cm
12 mm thickness

Punch Series



Craze
Resistance



Low water
Absorption



Chemical
Resistance



Easy
To clean



Fire
Resistance

 *Italian designs*

Size



40 x 40 cm



SURFACE:

Punch

THICKNESS:

12 mm



6504



Size



40 x 40 cm

SURFACE:

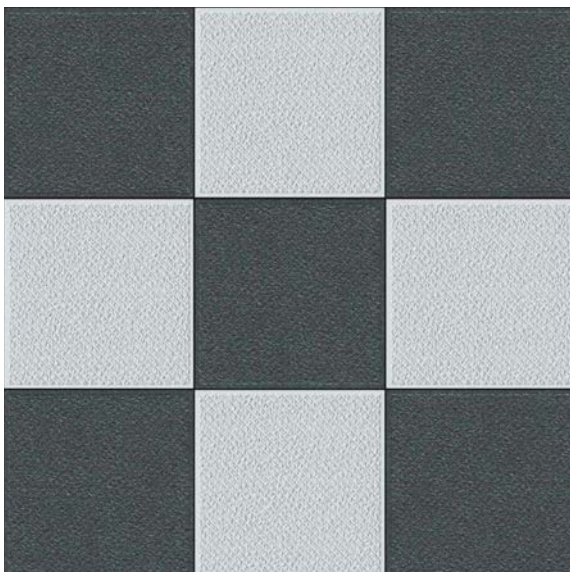
Punch

THICKNESS:

12 mm



6701 D/L



6701-HL



Size



40 x 40 cm

SURFACE:

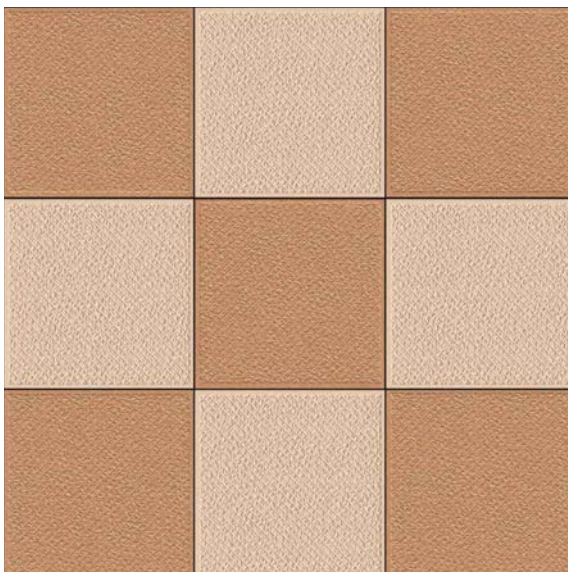
Punch

THICKNESS:

12 mm



6703 D/L



6702-HL



Size



40 x 40 cm

SURFACE:

Punch

THICKNESS:

12 mm



6703-D/L



6703-HL



Size



40 x 40 cm

SURFACE :

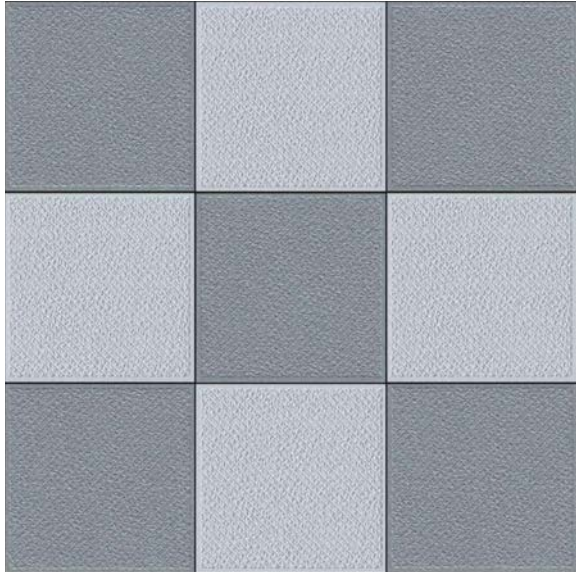
Punch

THICKNESS :

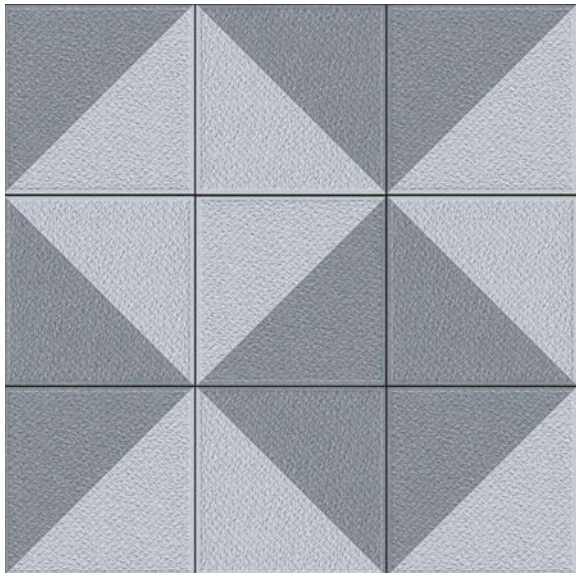
12 mm



6705 D/L



6705-HL



Size



40 x 40 cm

SURFACE :

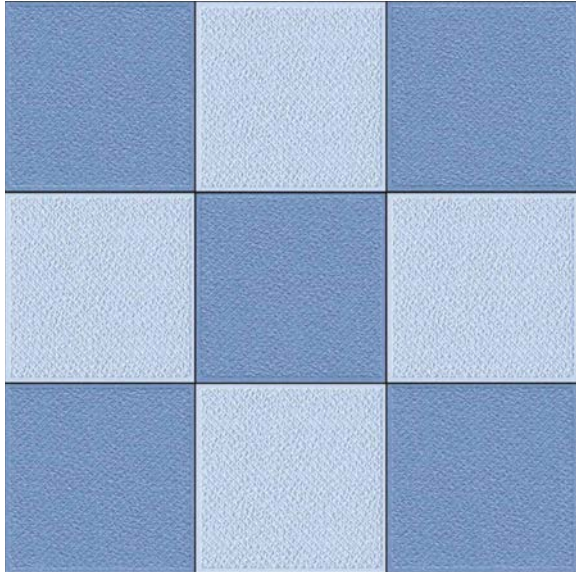
Punch

THICKNESS :

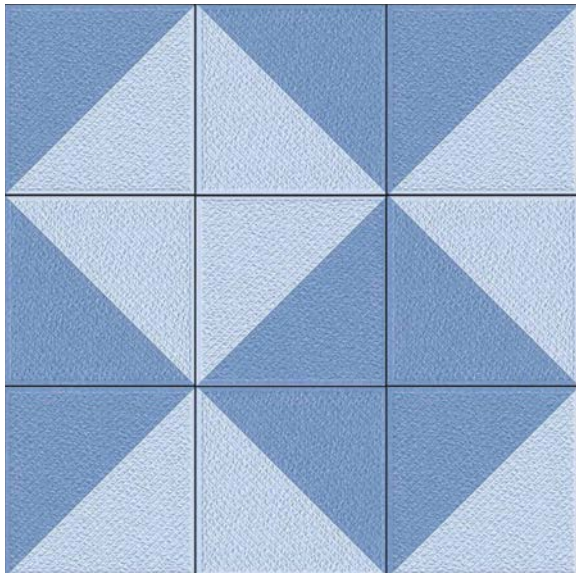
12 mm



604 D/L



6704-HL



Size



40 x 40 cm

SURFACE:

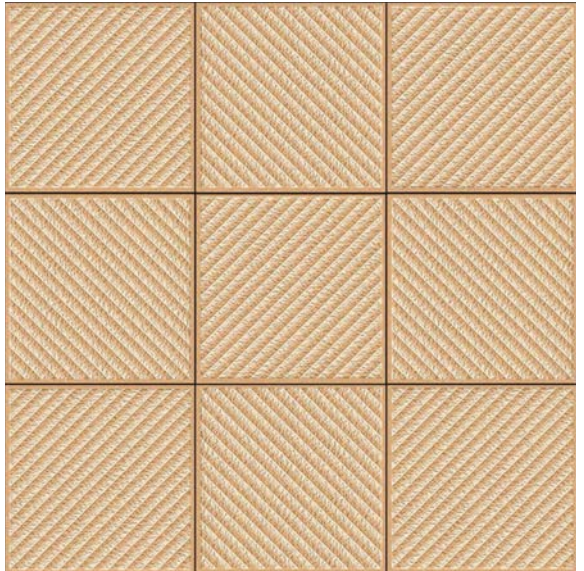
Punch

THICKNESS:

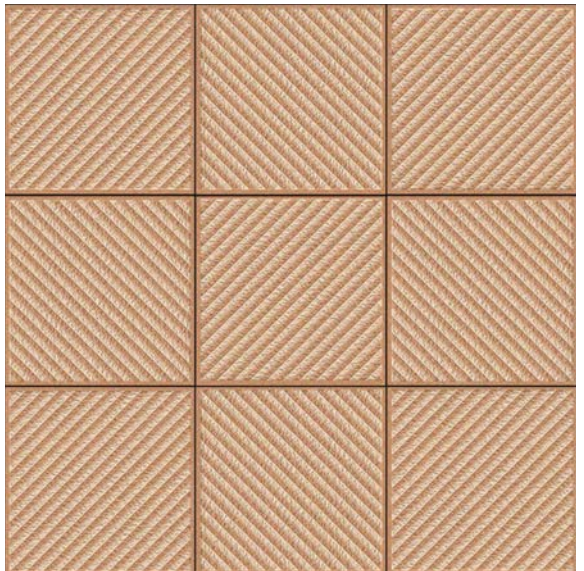
12 mm



6703 HL-1



6702-HL-1



Size



40 x 40 cm

SURFACE :

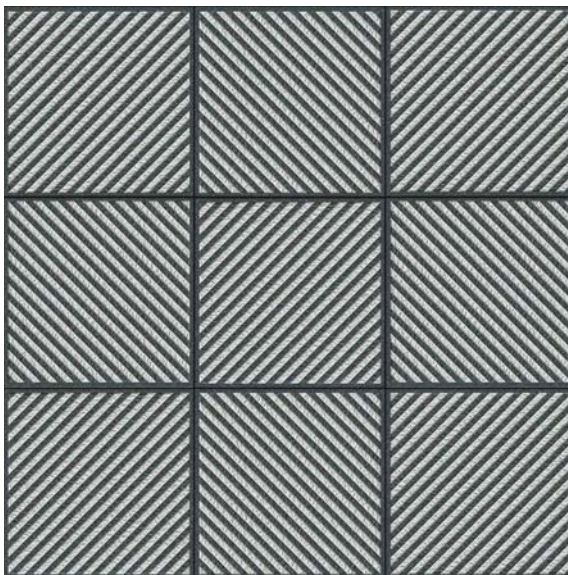
Punch

THICKNESS :

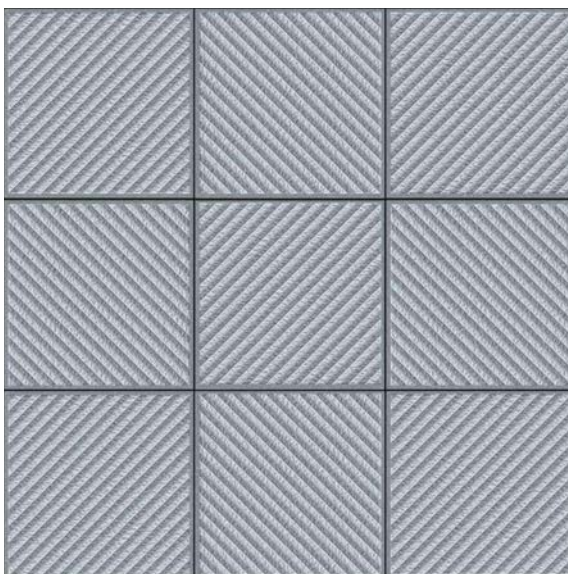
12 mm



6701 HL-1



6705-HL-1



Size



40 x 40 cm

SURFACE :

Punch

THICKNESS :

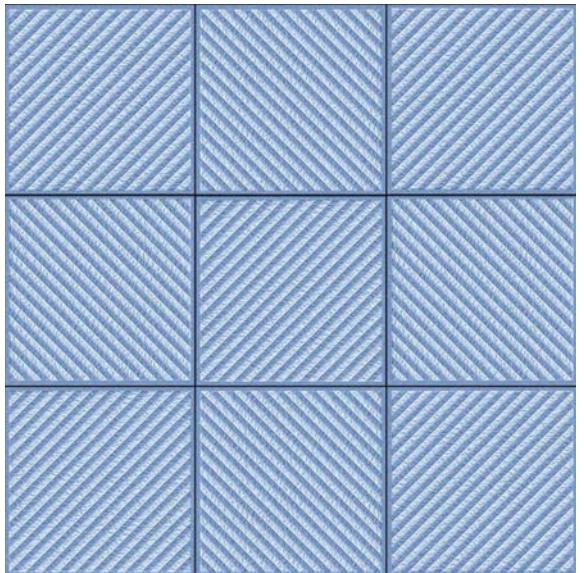
12 mm



6706



6704-HL-1



Size



40 x 40 cm

SURFACE:

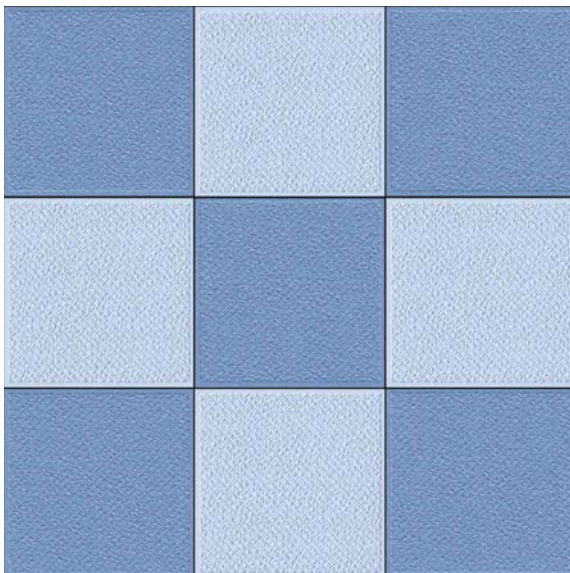
Punch

THICKNESS:

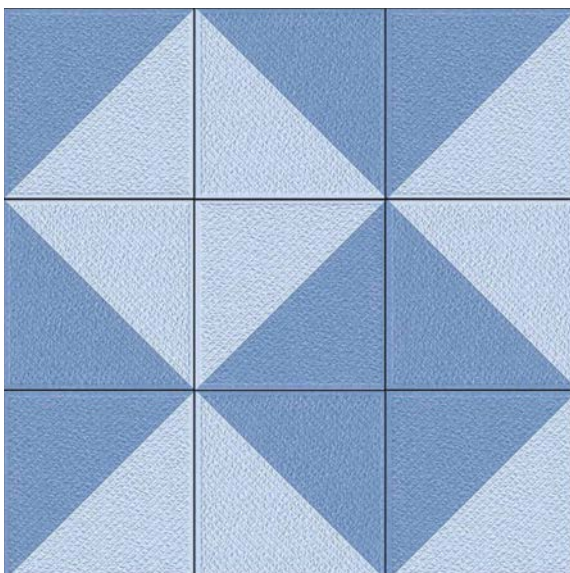
12 mm



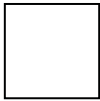
604-D



6704-HL



Size



40 x 40 cm
12 mm thickness

Plain Series



Cracking
Resistance



Low water
Absorption



Chemical
Resistance



Easy
To clean



Fire
Resistance

 *Italian designs*

Size



40 x 40 cm

SURFACE:

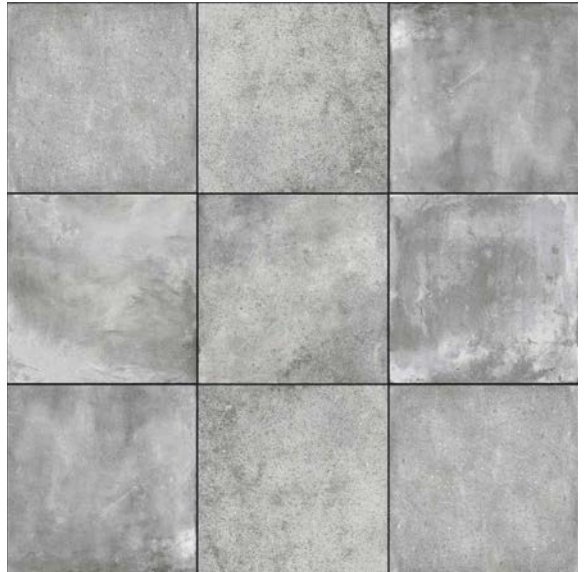
Plain

THICKNESS:

12 mm



2036



6034



Size



40 x 40 cm

SURFACE:

Plain

THICKNESS:

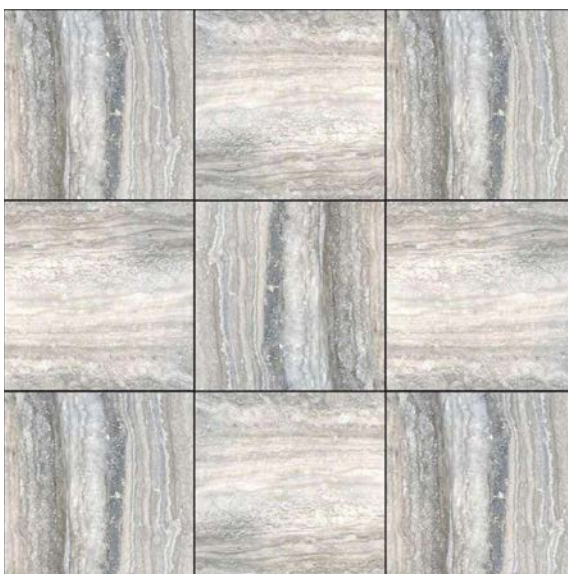
12 mm



6035



6033



Size



40 x 40 cm

SURFACE:

Plain

THICKNESS:

12 mm



6032-D



6032-L



Size



40 x 40 cm

SURFACE:

Plain

THICKNESS:

12 mm



6030



6031



Size



40 x 40 cm

SURFACE:

Plain

THICKNESS:

12 mm



6029



6028



Size



40 x 40 cm

SURFACE:

Plain

THICKNESS:

12 mm



6020



6019



Size



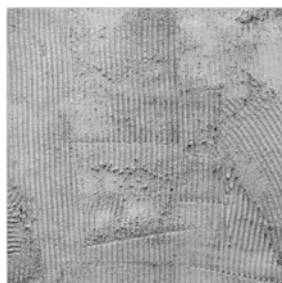
40 x 40 cm

SURFACE:

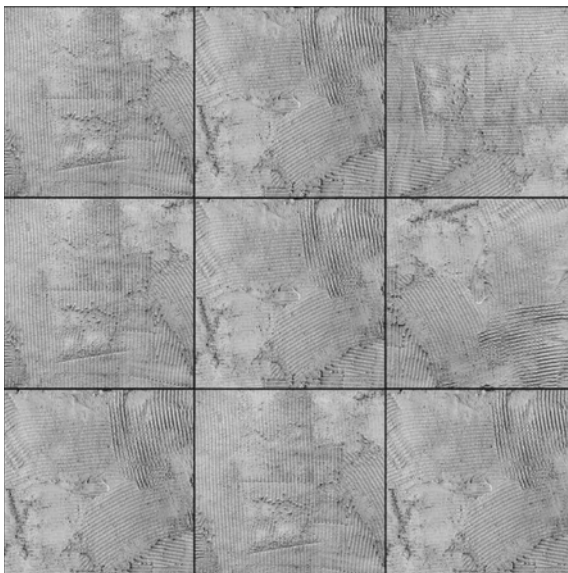
Plain

THICKNESS:

12 mm



6015



6022



Size



40 x 40 cm

SURFACE:

Plain

THICKNESS:

12 mm



6021



6023



Size



40 x 40 cm

SURFACE:

Plain

THICKNESS:

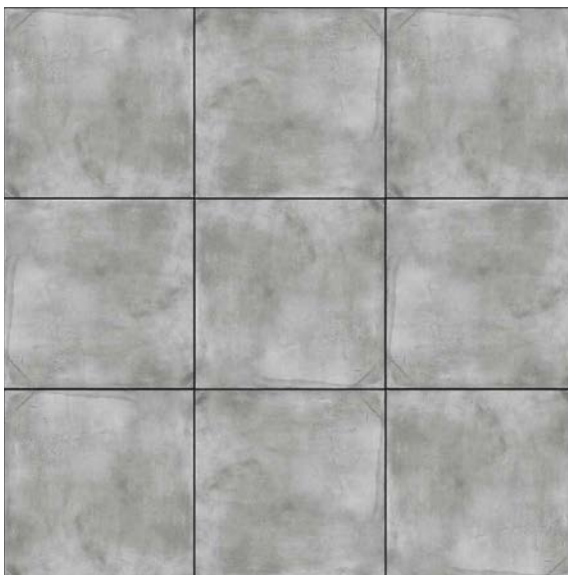
12 mm



6037



6027



Size



40 x 40 cm

SURFACE:

Plain

THICKNESS:

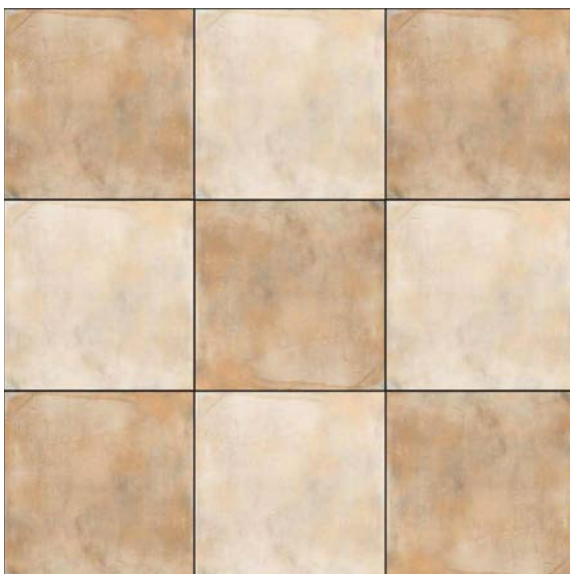
12 mm



6025-HL



6025 D/L



Size



40 x 40 cm

SURFACE:

Plain

THICKNESS:

12 mm



6018



6024



Size



40 x 40 cm

SURFACE:

Plain

THICKNESS:

12 mm



6001



6002



Size



40 x 40 cm

SURFACE:

Plain

THICKNESS:

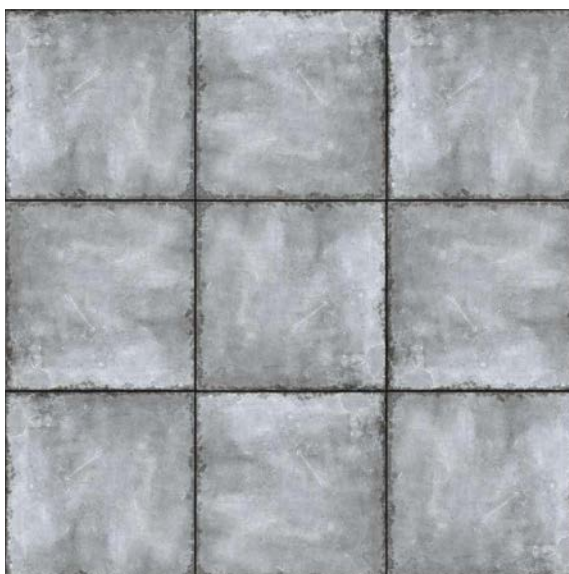
12 mm



6003



6004



Size



40 x 40 cm

SURFACE:

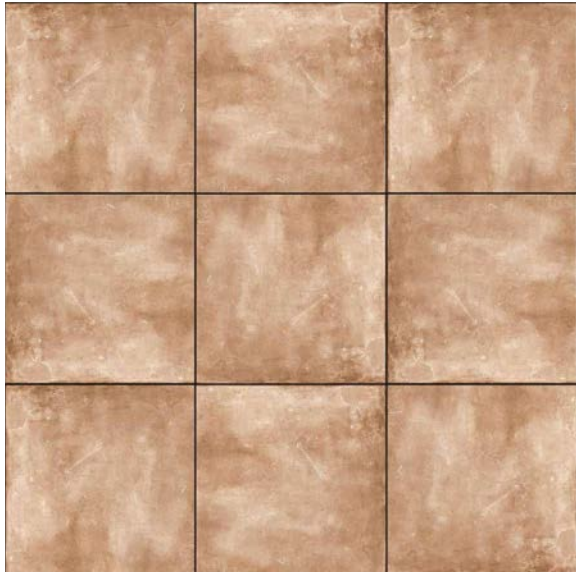
Plain

THICKNESS:

12 mm



6005



6040



Size



40 x 40 cm

SURFACE:

Plain

THICKNESS:

12 mm



6017



6041



Size



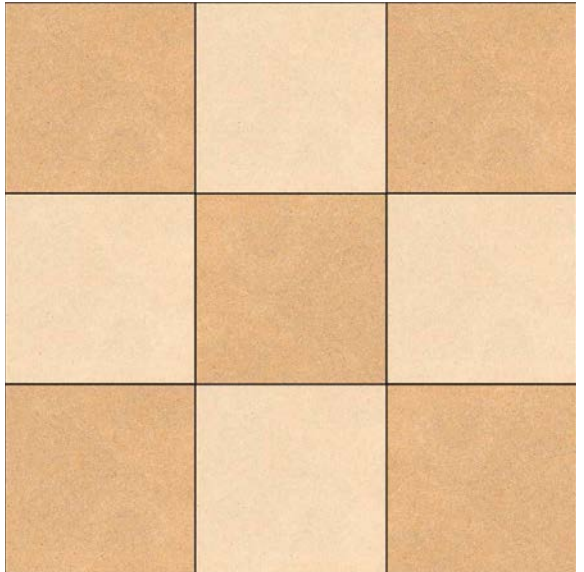
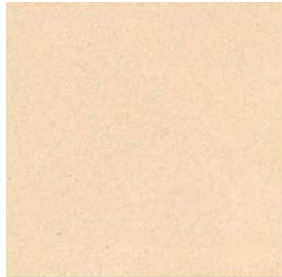
40 x 40 cm

SURFACE:

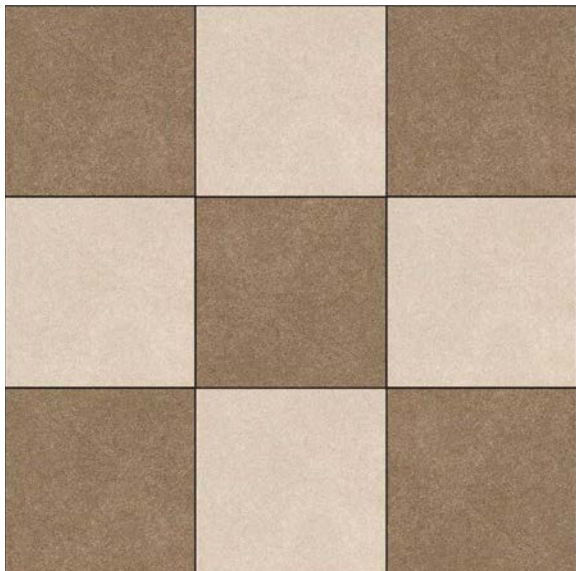
Plain

THICKNESS:

12 mm



6006 D/L



6007 D/L

Size



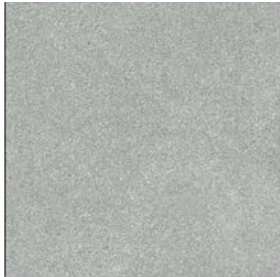
40 x 40 cm

SURFACE:

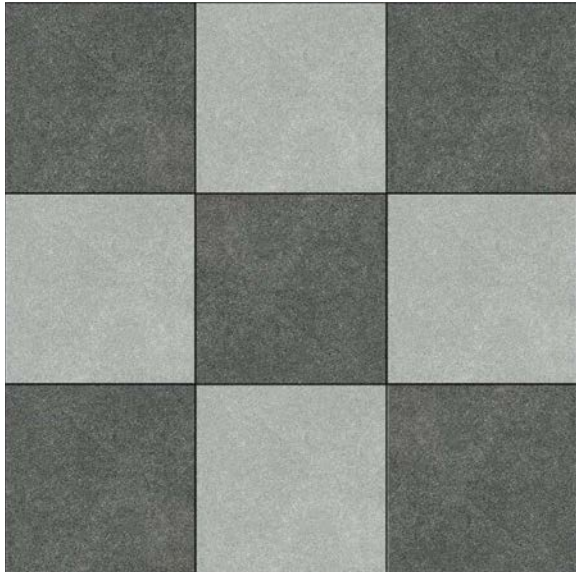
Plain

THICKNESS:

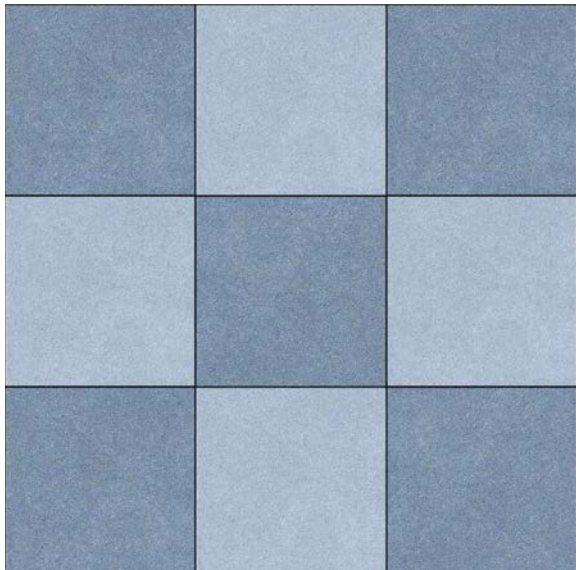
12 mm



6008-D/L



6009-D/L



Size



40 x 40 cm

SURFACE:

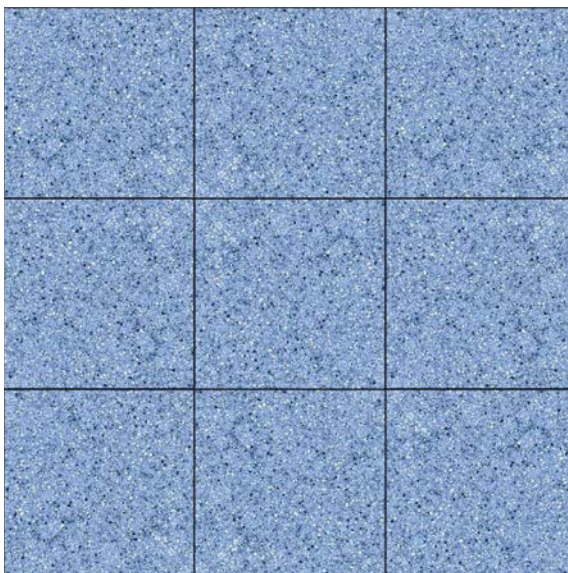
Plain

THICKNESS:

12 mm



6011



6012



Size



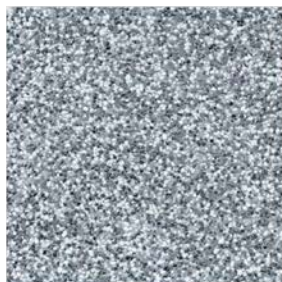
40 x 40 cm

SURFACE:

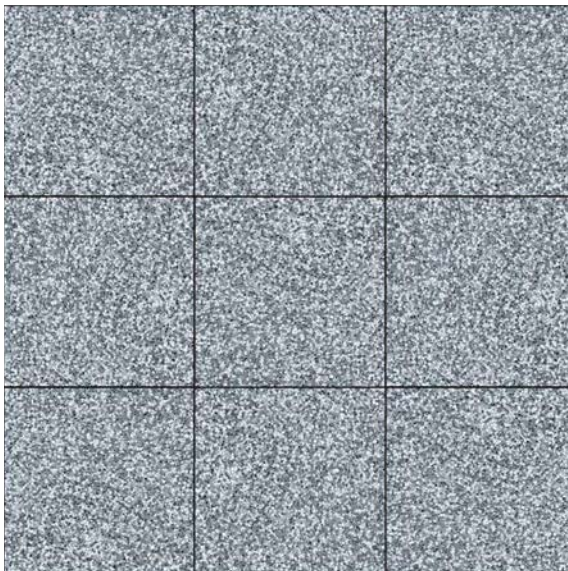
Plain

THICKNESS:

12 mm



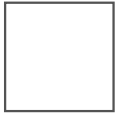
6013



6014



Size



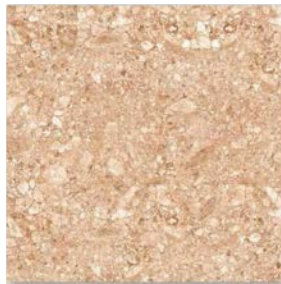
40 x 40 cm

SURFACE:

Plain

THICKNESS:

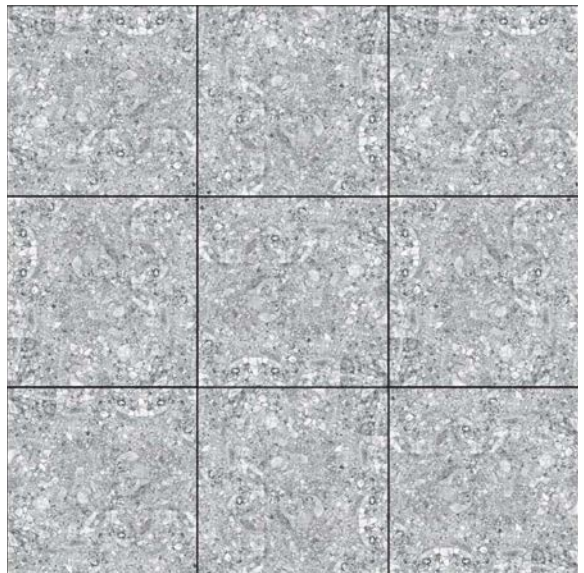
12 mm



6038



6039





Technical Specifications - 400 X 400 MM

CHARACTERISTIC			
REGULATORY PROPERTIES	TEST METHOD	STANDARD AS PER ISO-13006/ EN14411 GROUP Bla	DIAMOND VALUE
Dimension & Surface Quality			
Deviation in Length & Width	ISO 10545-2	+ / - 0.5%	+ / - 0.2 %
Deviation in Thickness	ISO 10545-2	+ / - 5.0%	+ / -2.0%
Straightness of Sides	ISO 10545-2	+ / - 0.5%	+ / - 0.25 %
Rectangularity	ISO 10545-2	+ / - 0.5 %	+ / - 0.1 5 %
Surface Flatness	ISO 10545-2	+ / - 0.5%	+ / - 0.25 %
Color Resistance to Light	ISO 10545-16	Unaltered	No Change
Surface Coating	Nano Machine	As Per Manufacturer Norms	Nano Polished
Physical Properties			
Water Absorption	ISO 10545-3	< 0.5%	< 0.05%
Flexural Strength (MOR)	ISO 10545-4	> 35 N / mm2	> 45 N / mm2
Mohs Hardness	EN 101	Min 6	7 Mohs
Flexural Breaking Strength	ISO 10545-4	>1300 N	2850 N
Bulk Density (Gm / cc)	DIN 51082	>2 gm/cc	2.5 gm/cc
Glossiness	Glossometer	As Per Manufacturer Norms	Min 90 % reflection
Slip Resistance Coefficient of Friction	ISO 10545-17	> 0.4	> 0.6
Deep Abrasion Resistance	ISO 10545-6	Max 175 mm3	Max 145 mm3
Chemical Properties			
Staining Resistance	ISO 10545-14	Resistant	Resistant
Household Chemicals	ISO 10545-13	No Damage	No Damage
Thermal Properties			
Thermal Shock Resistance	ISO 10545-9	No Damage	No Damage
Thermal Expansion	ISO 10545-10	9 x 10 - 6 max	6 x 10 -6
Moisture Expansion	ISO 10545 - 10	Nil	Nil



20 FEET CONTAINER

CONTAINER PACKAGING DETAILS - 400 × 400 mm

Total Pallet	19
Box Pallet	72
Total Boxes	1368
Net Weight / Box	20.00 kgs
Total Sq.mtr.	1094.40
Pcs / Box	5
Sqm. / Box	0.80 Sq.mtr.
Approx Total Weight (Kgs.)	27360.00



Diamond Vitrified LLP.

Opp.Rangpar Village, Jetpar Pipli Road,At-Rangpar Morbi,
Gujarat India.

Customer Care : +91 93114 48700

www.diamondgvt.com | export@diamondgvt.com